

aContents

| | |
|---------------------------------------|---|
| Introduction | 2 |
| How to install iZZi driver? | |
| Step 1: Getting Started | 2 |
| Step 2: License Agreement | 2 |
| Step 3: Installation Folder | 3 |
| Step 4: Completion | 4 |
| How to install User Terminal? | |
| Step 1: New Hardware Wizard | 5 |
| Step 2: Software Installation Request | 6 |
| Step 3: Software Searching | 7 |
| Step 4: Software Installation | 8 |
| Step 5: Connection | 8 |

Introduction

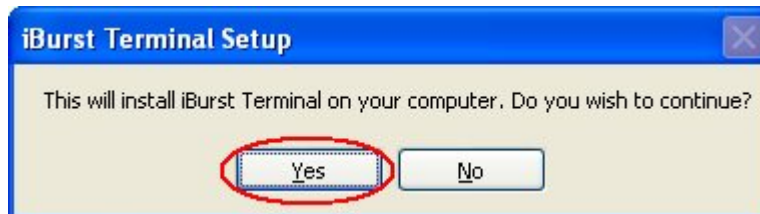
What is iZZi driver?

iZZi driver is made to offer convenient and simple mobile wireless broadband Internet connection setup. Forget about wires and cables being tangled up, iZZi driver makes easy setup for your terminal desktop, user terminal card and user terminal UTU, UTD as well as UTC. Once installed, you can then plug in the hardware—User Terminal to the PC and Internet connection is on-the-go. Follow the steps below for complete installation.

How to install iZZi driver?

Step 1: Getting Started

Before installation, you are required to select the type of operating system in use in order to ensure proper installation. Click on the type of User Terminal to install iZZi driver UTU, iZZi driver UTC or iZZi driver UTD. After selecting the type of driver, iBurst Terminal Setup window as follows will prompt you whether or not to continue the installation. Click on Yes to continue or No if you wish to quit installation setup.



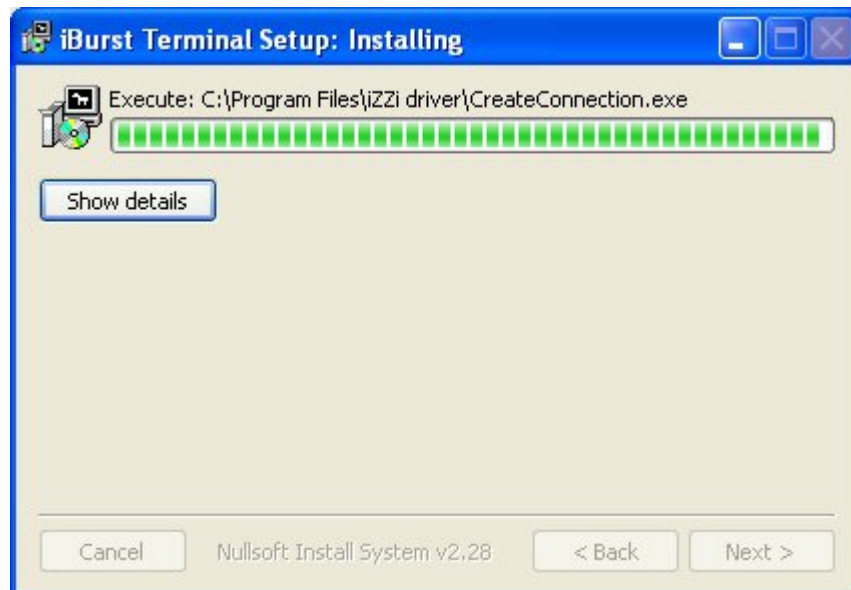
Step 2: License Agreement

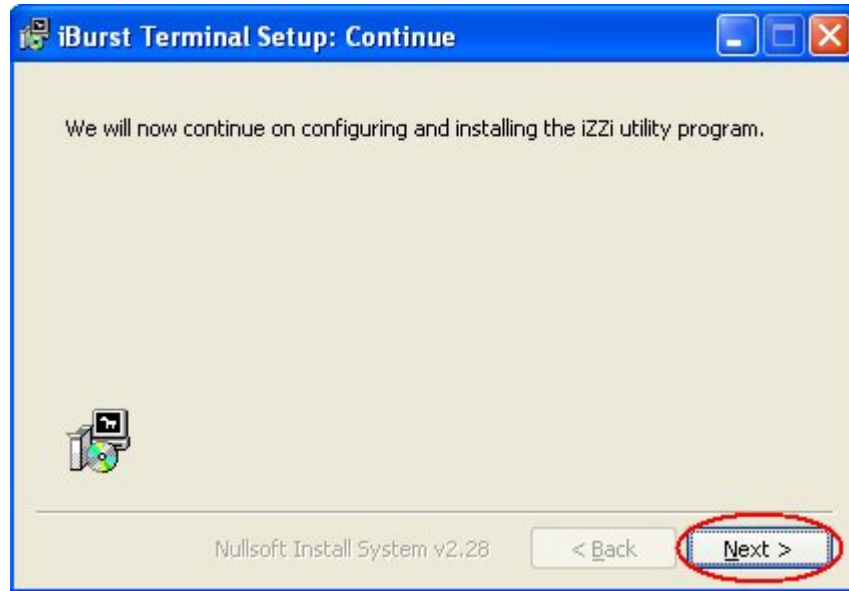
Before proceeding to the next step, you are required to read the License Agreement in the pop-up window to understand the terms and conditions of User Terminal. Upon acceptance of terms and conditions, click on I Agree to continue installation.



Step 3: Installation Folder

A green loading bar is displayed while installation is in progress. You may click on Show Details to view details of installation process. It's not necessary to create your own user name and password for new connection. A default user name and password are created for you.

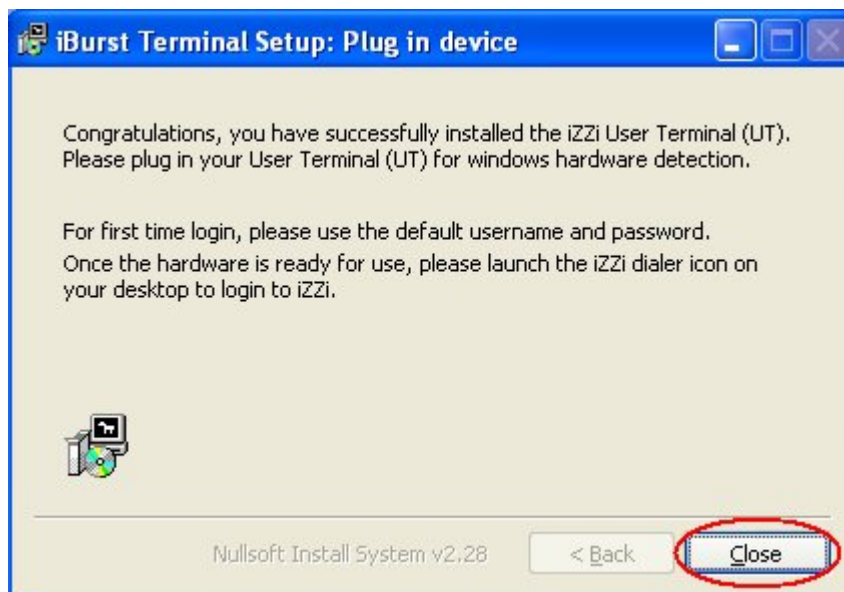




Step 4: Completion

Congratulations! Your iZZi driver installation is completed!

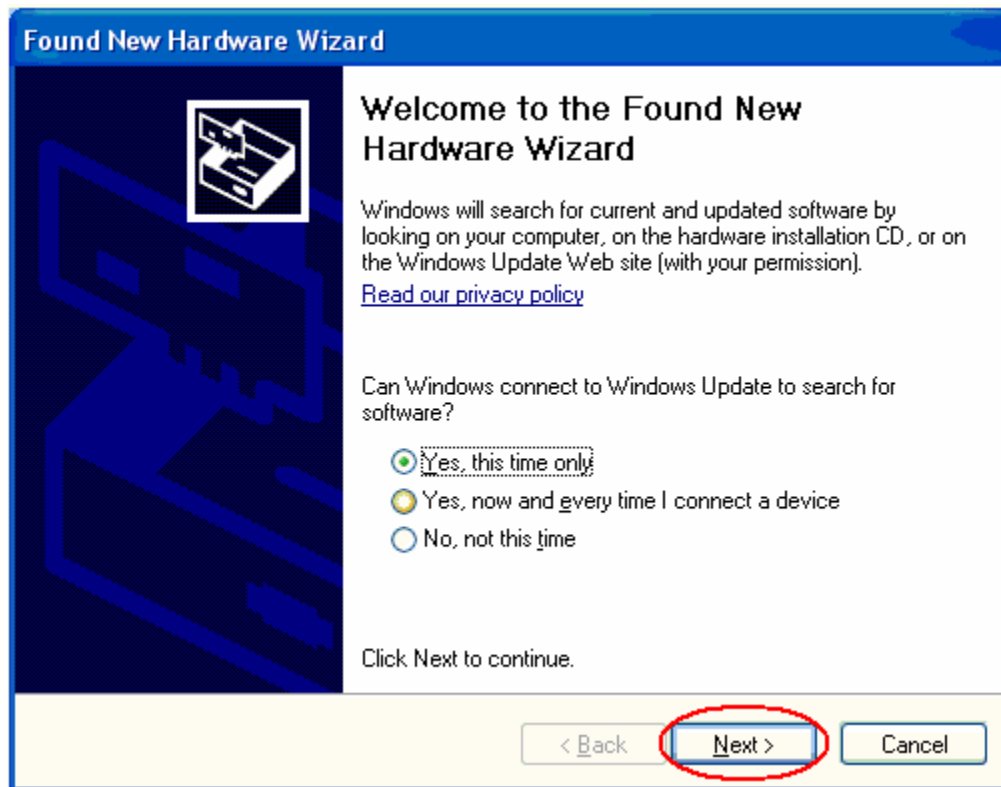
Internet connection is yet to be accessible. Please refer to the window below as you are required to plug in your device for windows hardware detection. Close the Plug-in device window.



How to install User Terminal

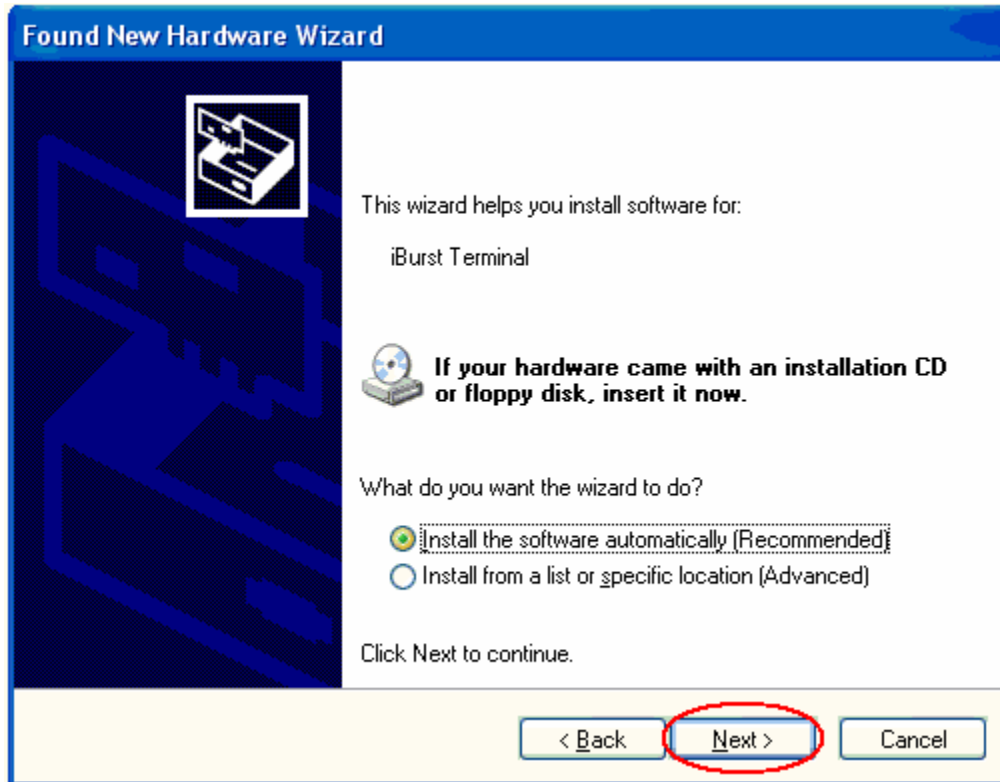
Step 1: New Hardware Wizard

Plug in the User Terminal for installation setup. Notice a Found New Hardware Wizard pop-up window. Permission is sought to allow Windows to connect to Windows Update for current and updated software. Select first option and click Next to proceed.



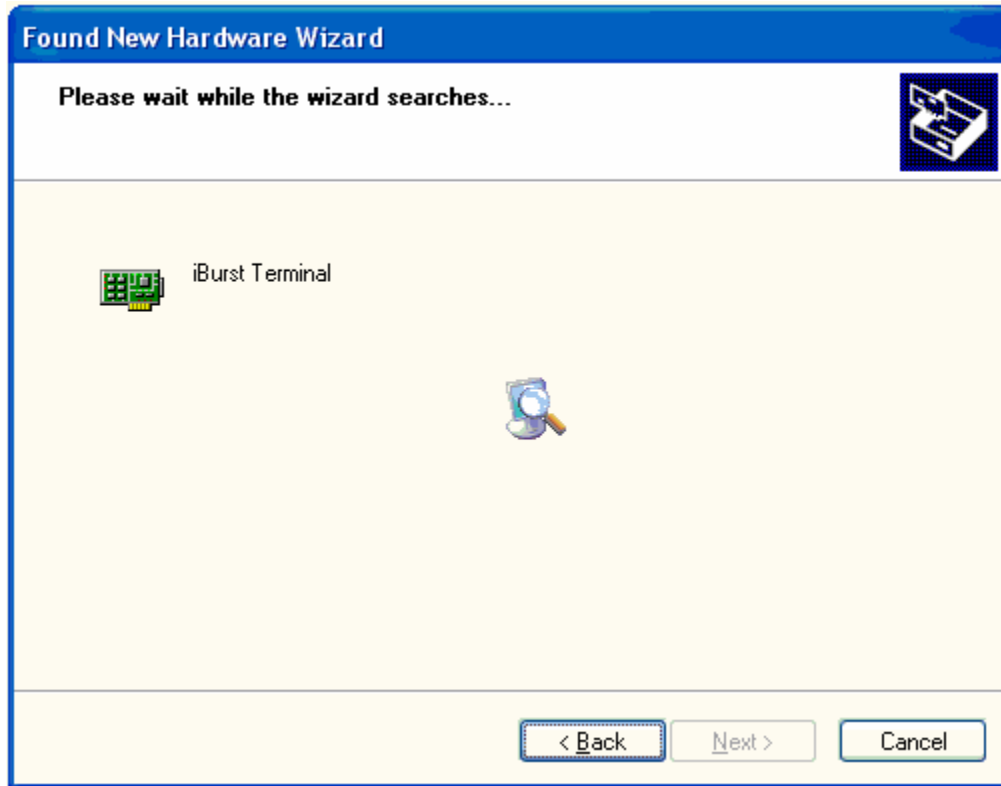
Step 2: Software Installation Request

Select a way of assistance by the wizard. Recommended option is to select Install the software automatically. Click on Next to continue setup.



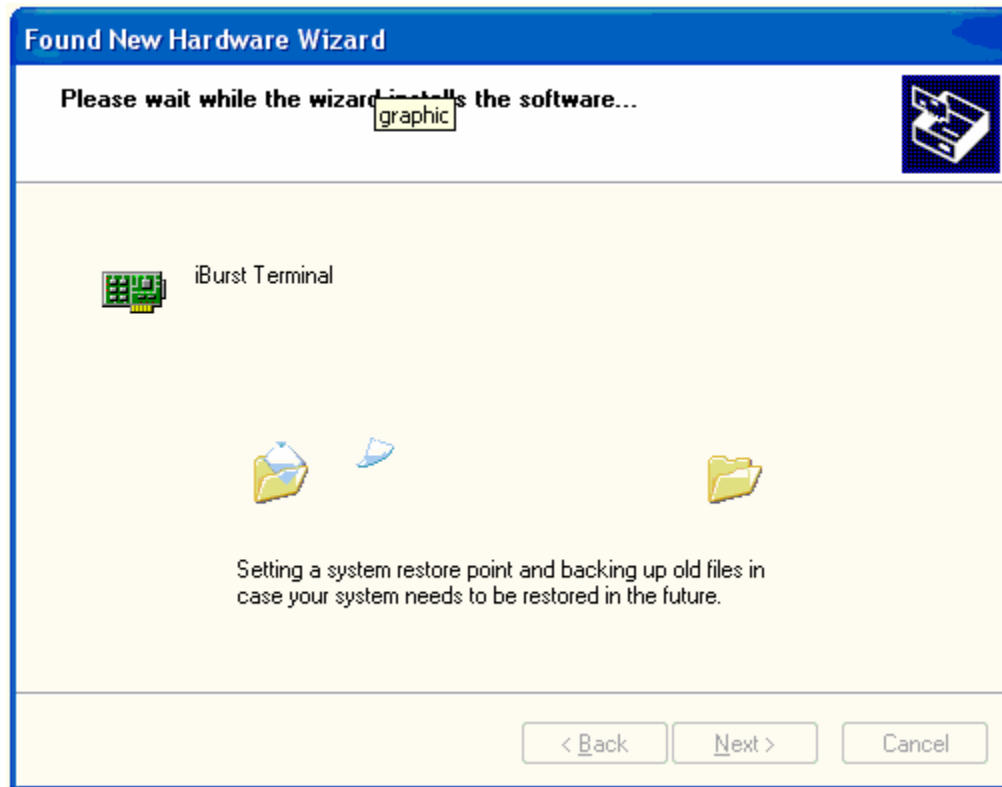
Step 3: Software Searching

Please wait while wizard searches for current and updated software on Windows Update Web site. A Hardware Installation pop-up window appears while waiting. Click on Continue Anyway.



Step 4: Software Installation

Please wait while wizard installs the software. Upon completion for iBurst Terminal software installation, click on Finish to close the wizard. Go to desktop, click iZZi dialer icon to access the Internet.



Step 5: Connection

Click on Connect in the Network Connections window and click on Connect again in the Connect iZZi window to access the Internet via User Terminal.

